

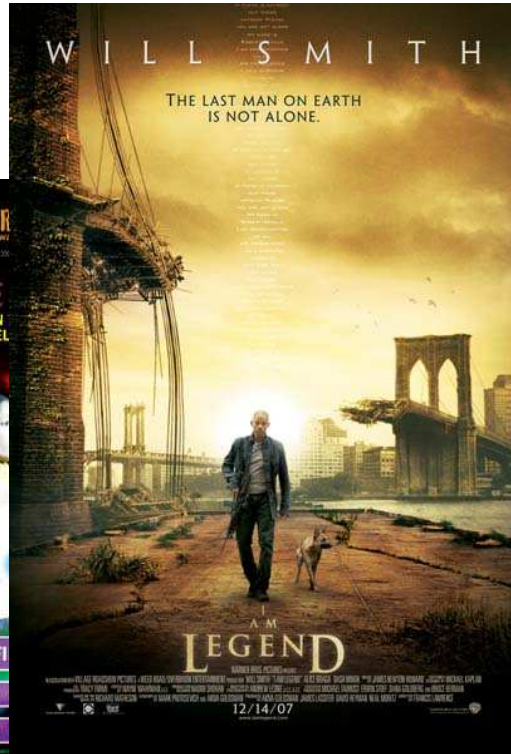
Jeanette M. Southwood, M.A.Sc., P.Eng., QPESA, QPRA  
Principal / Global and Canadian Brownfields Initiatives Leader

## **Magnets for Sustainability and Investment: International Insights for Canadian Cities**



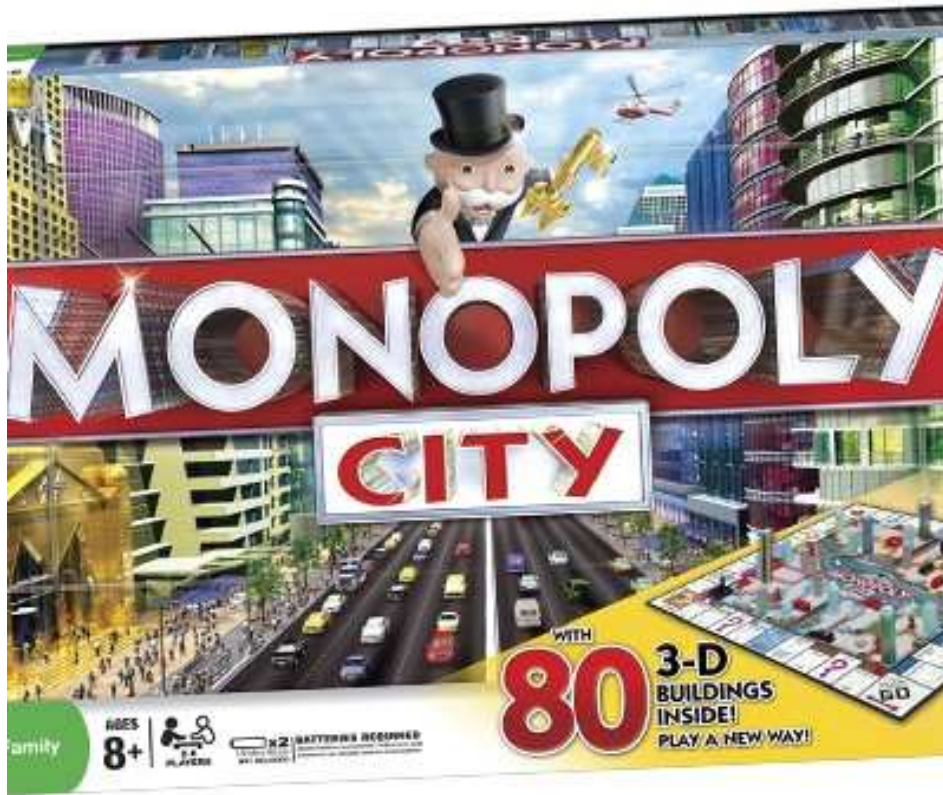


# Magnets for Sustainability and Investment





# Magnets for Sustainability and Investment



## Watch your city fortune grow!

In this metropolitan edition of MONOPOLY, be the top property developer and watch your dream city rise before your eyes. What will you build-- houses or industrial complexes, schools, skyscrapers or stadiums? The choice is yours. But watch out—a rival developer could build a sewage plant (or power plant) right next to your prize property and make its value plummet! So build wisely and rake in the rent... and the prestigious MONOPOLY tower could be yours!

[Text source: Hasbro TV/web ads]



# Magnets for Sustainability and Investment

